

*Leaf sandy loam*

**Kolb Site**

#2

dense forest + undergrowth

slew (ditch)

Small mound including brick fragments, buttons, glass + colonial ceramics

cleared

ditch

NK

dense forest + undergrowth

Road

fabric impressed sheds

cleared

Thom's Creek Pottery

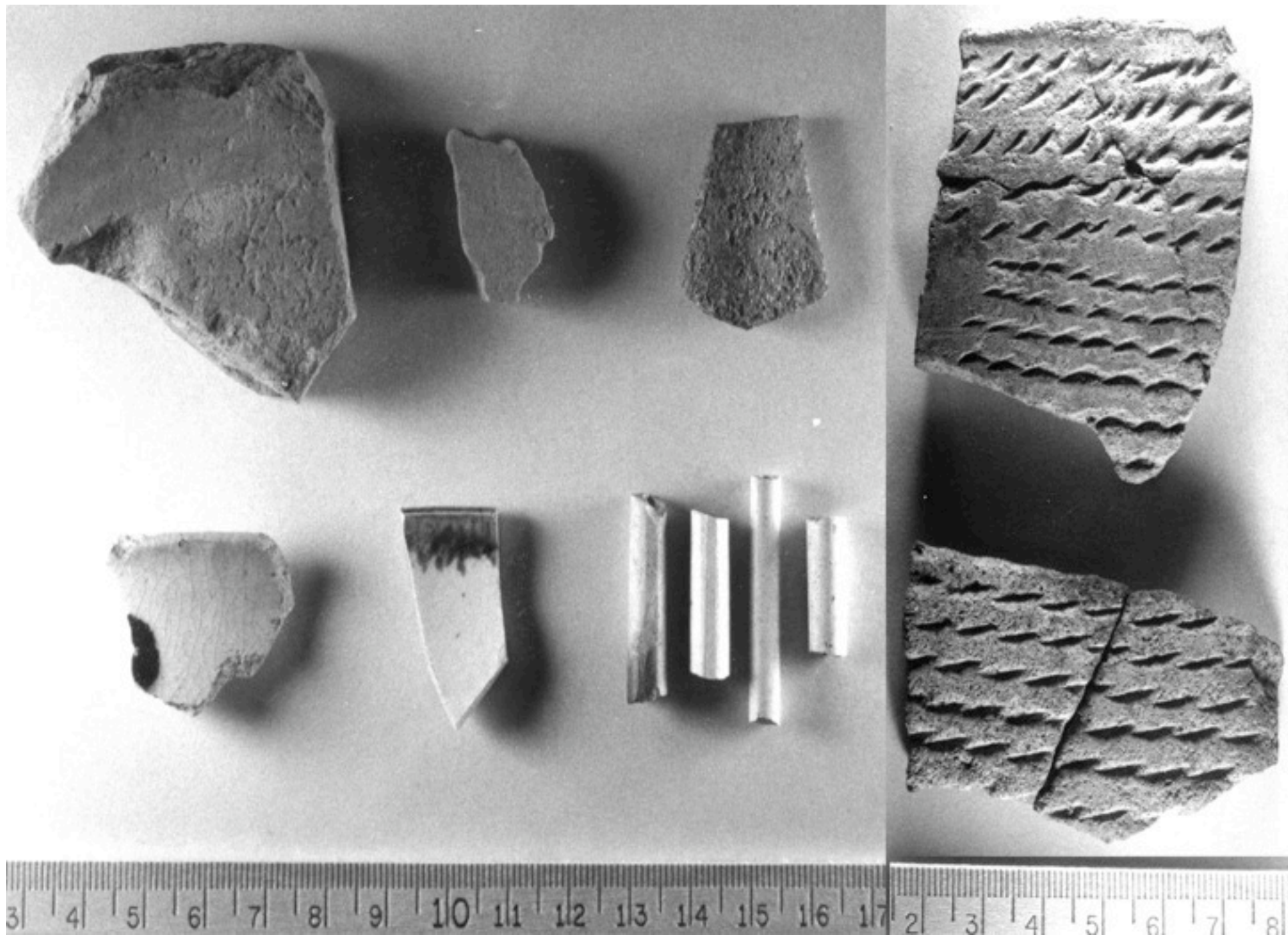
knoll little disturbed by bulldozers

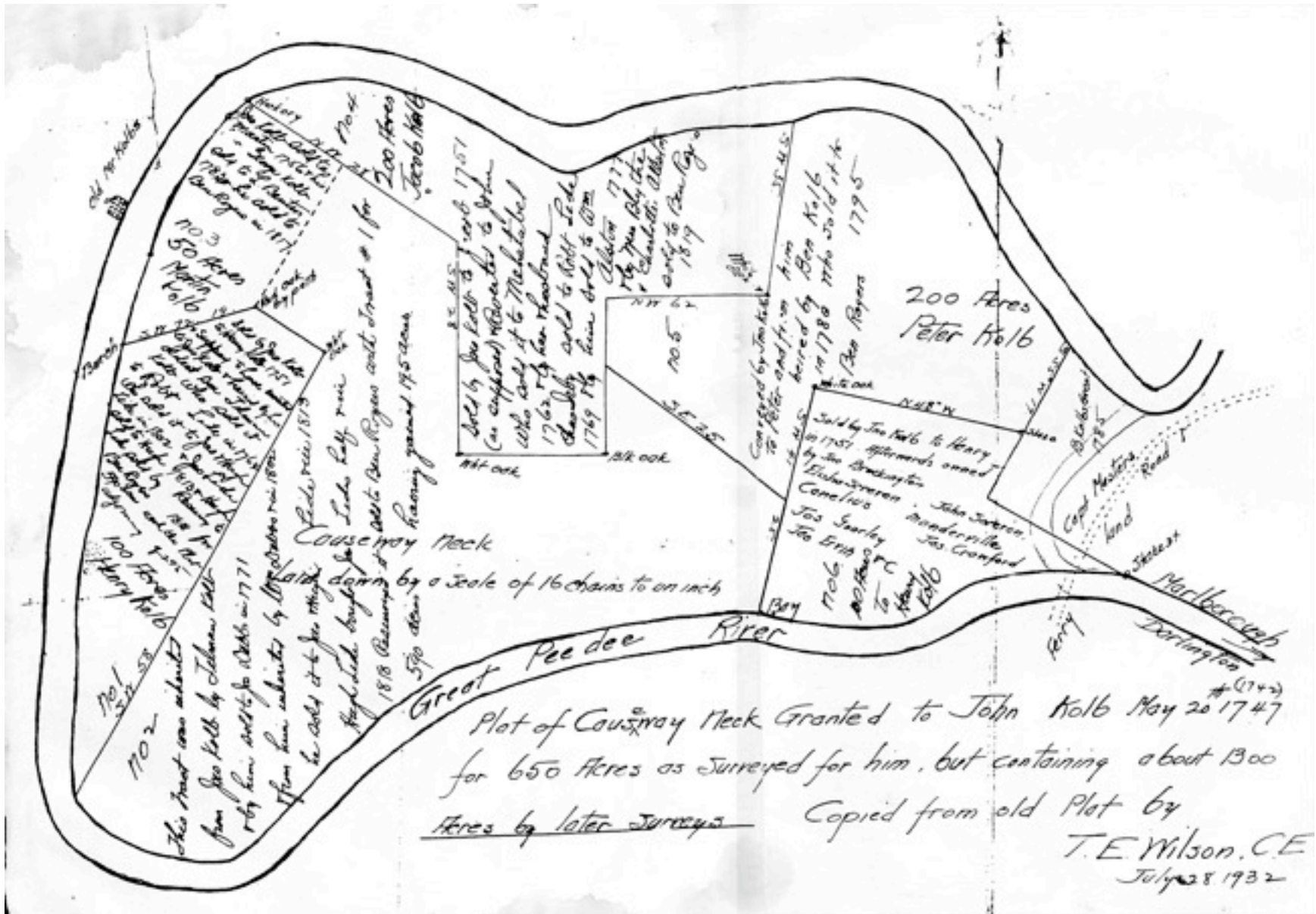
Small shell Deposits approx. 2-4 ft. wide

dense forest + undergrowth

bluff

colonial artifacts are to be found on the entire site.

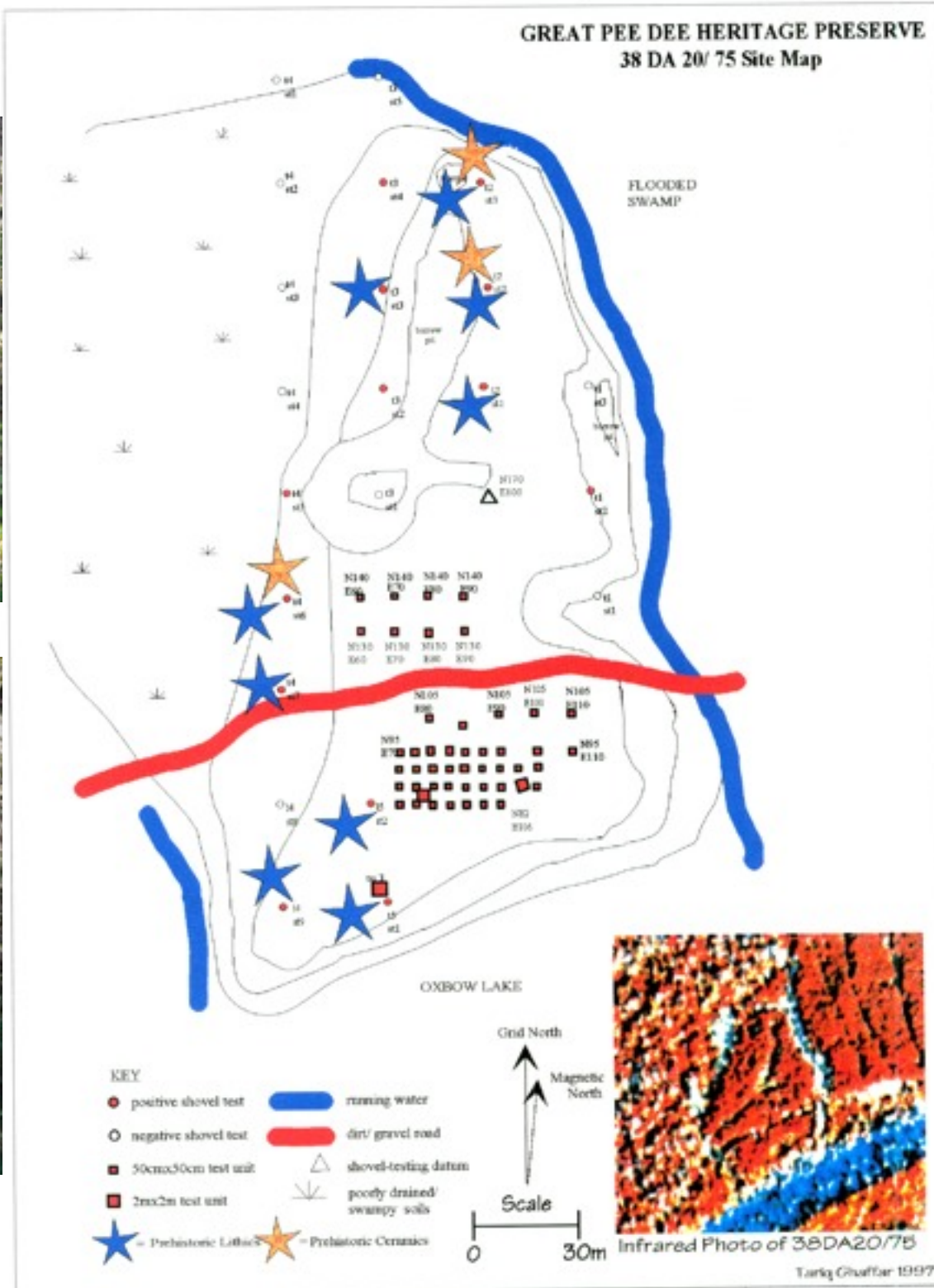




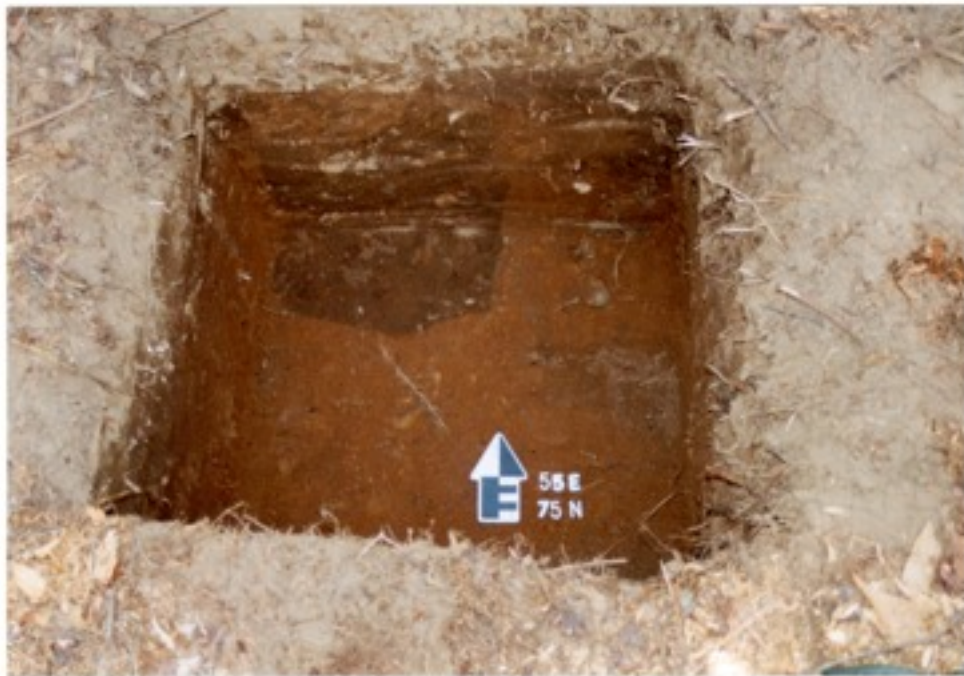




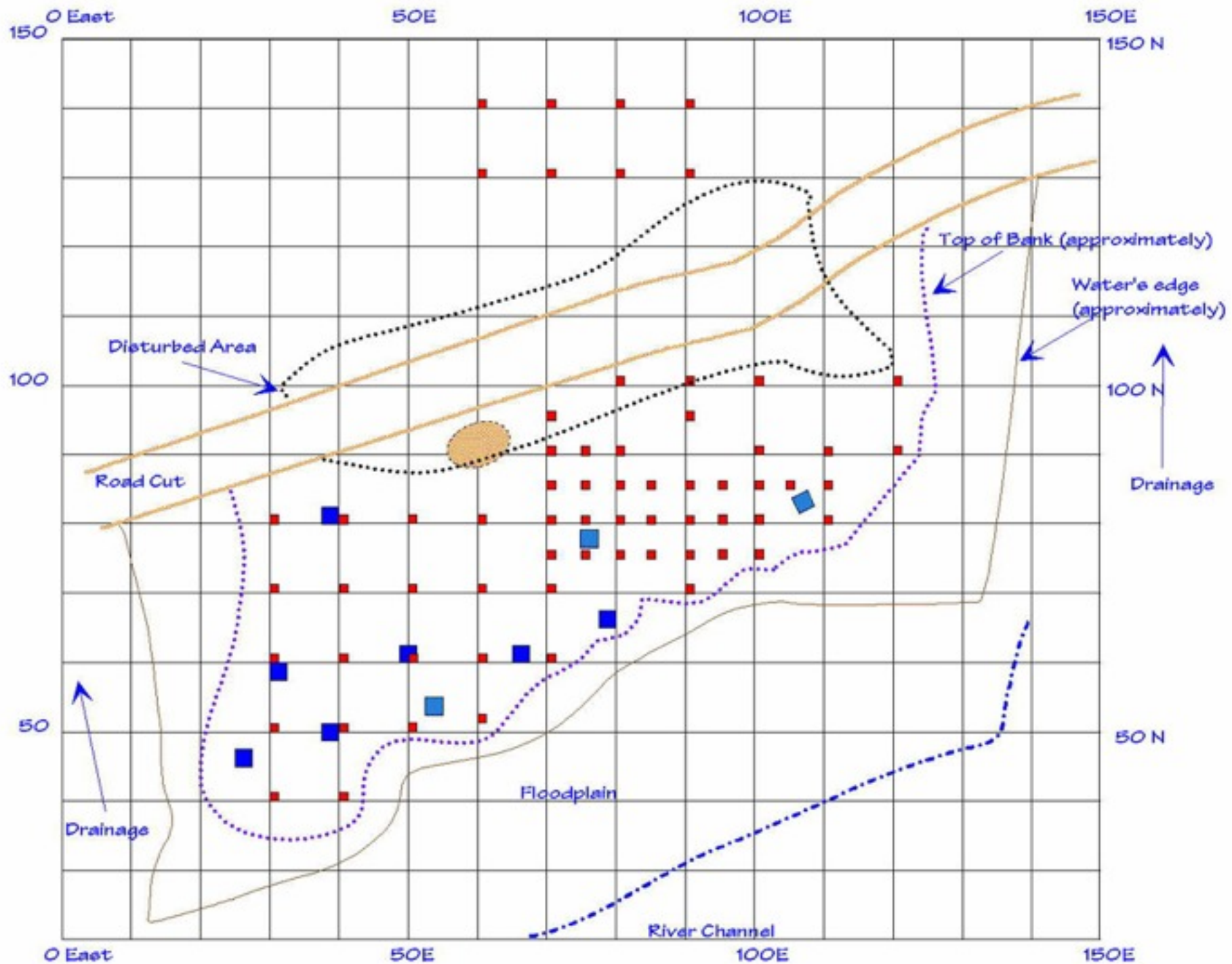


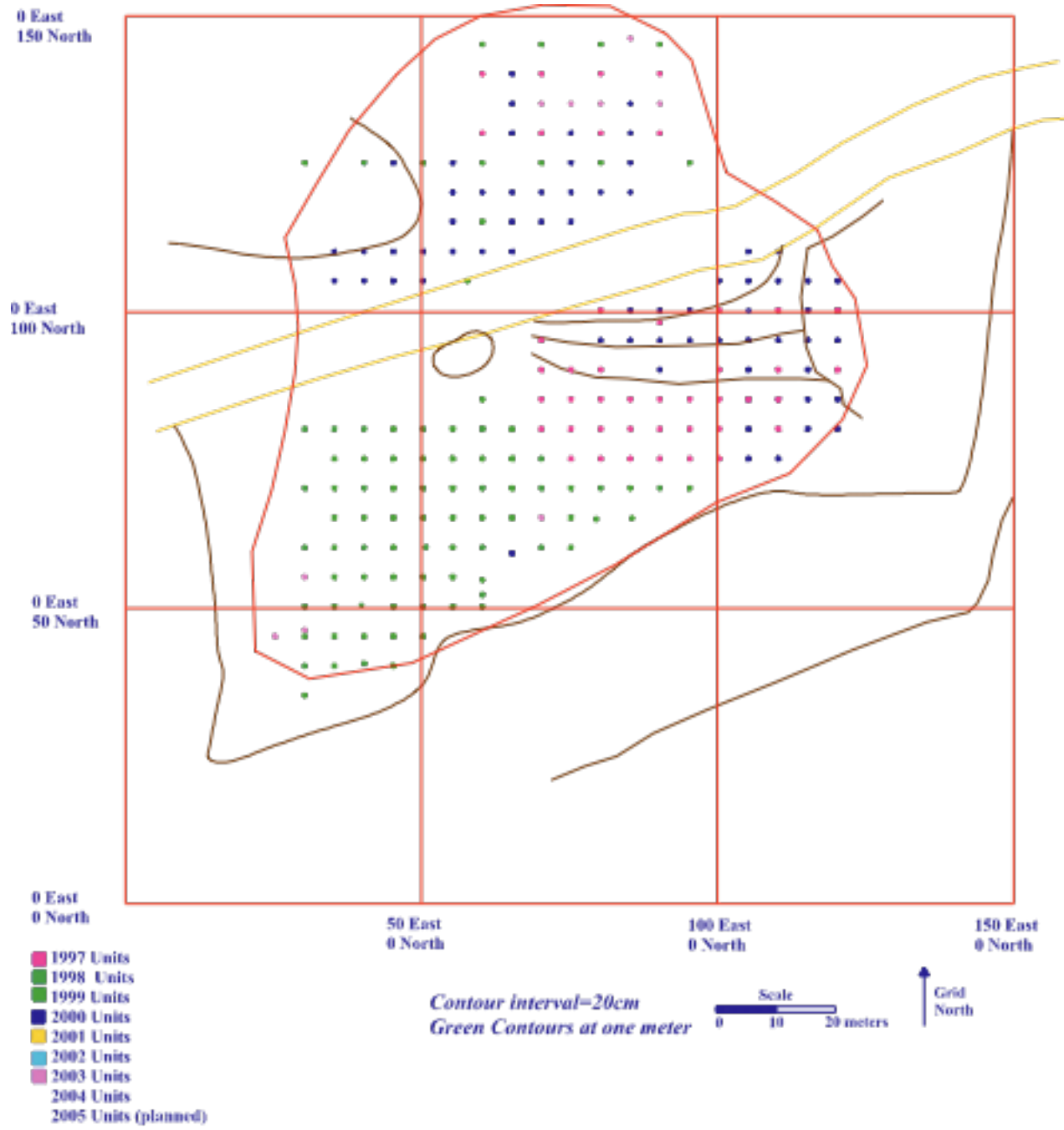




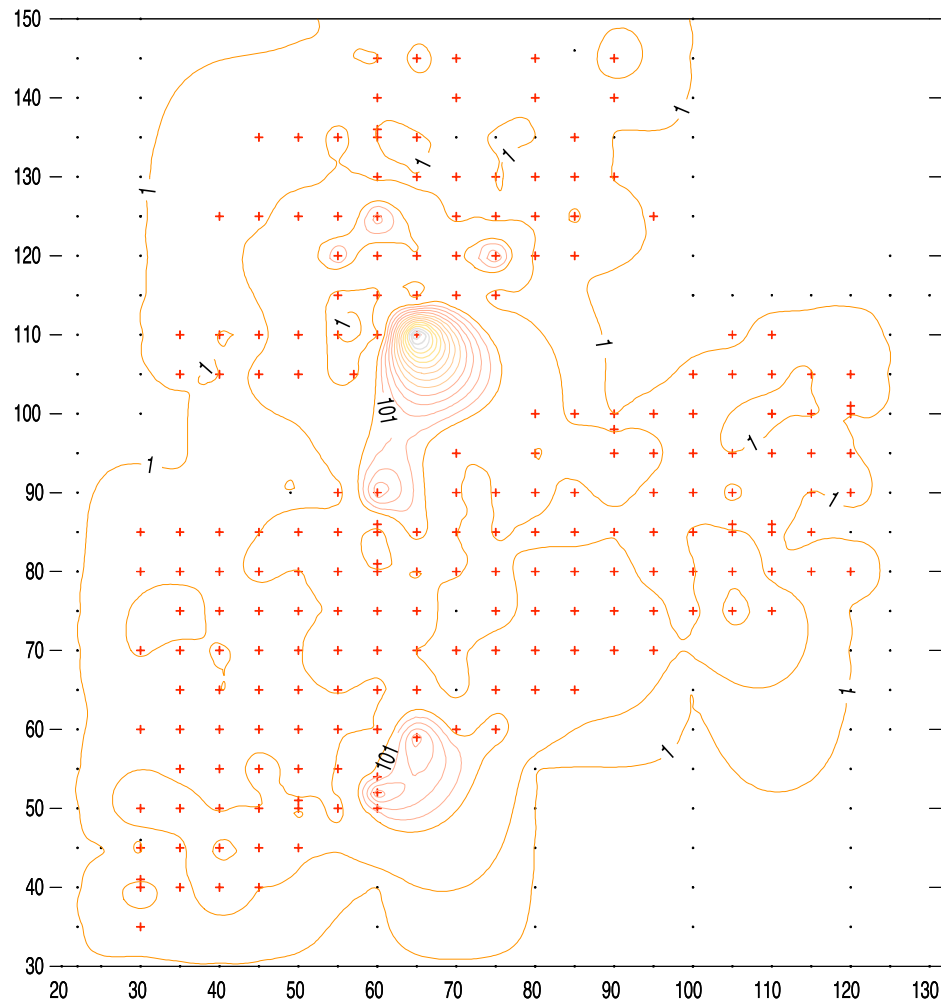


# 38DA75-- The Johannes Kolb Site

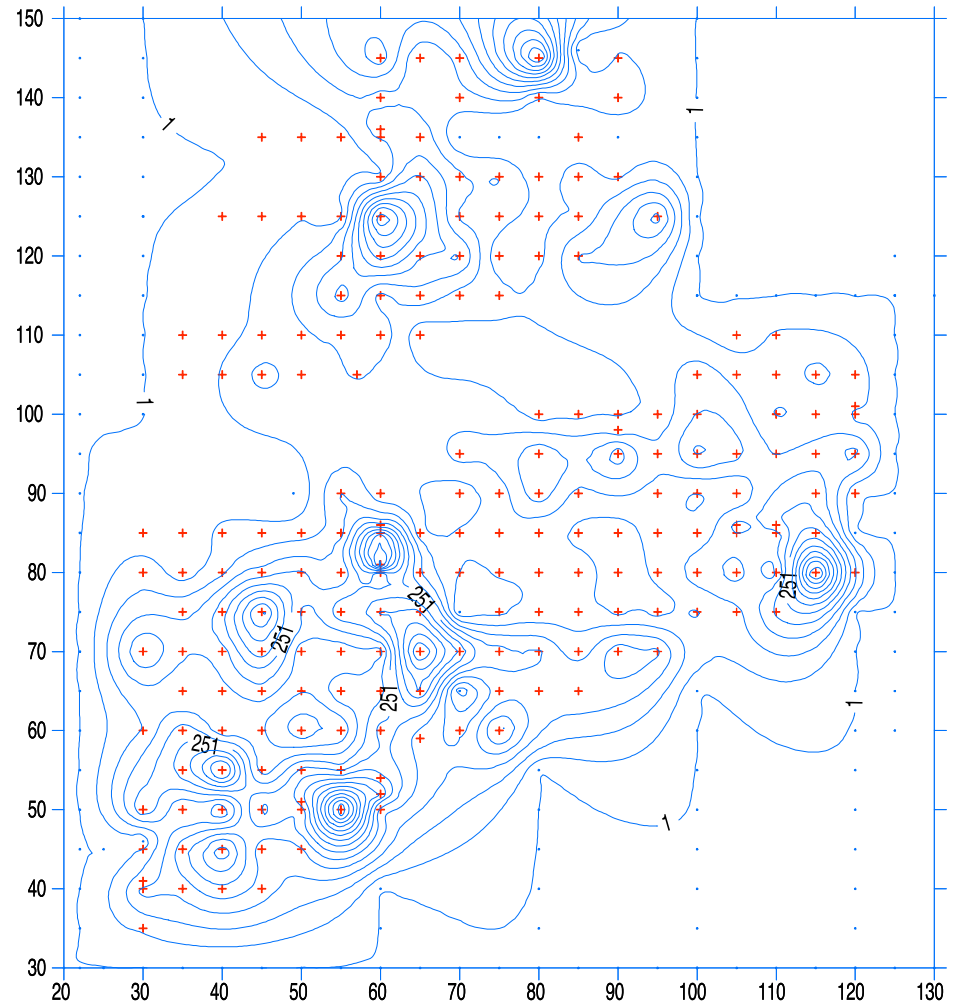




# Prehistoric Ceramics and Lithic Debitage in 50cm squares



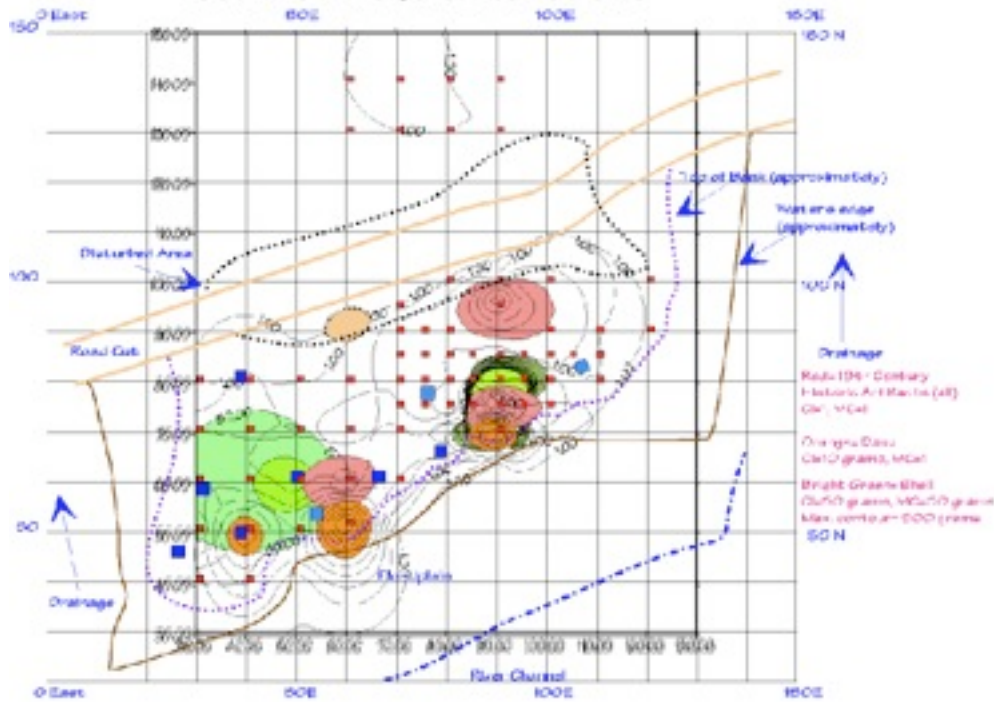
Orange= Ceramics by weight, MC= 1g, CI=20g



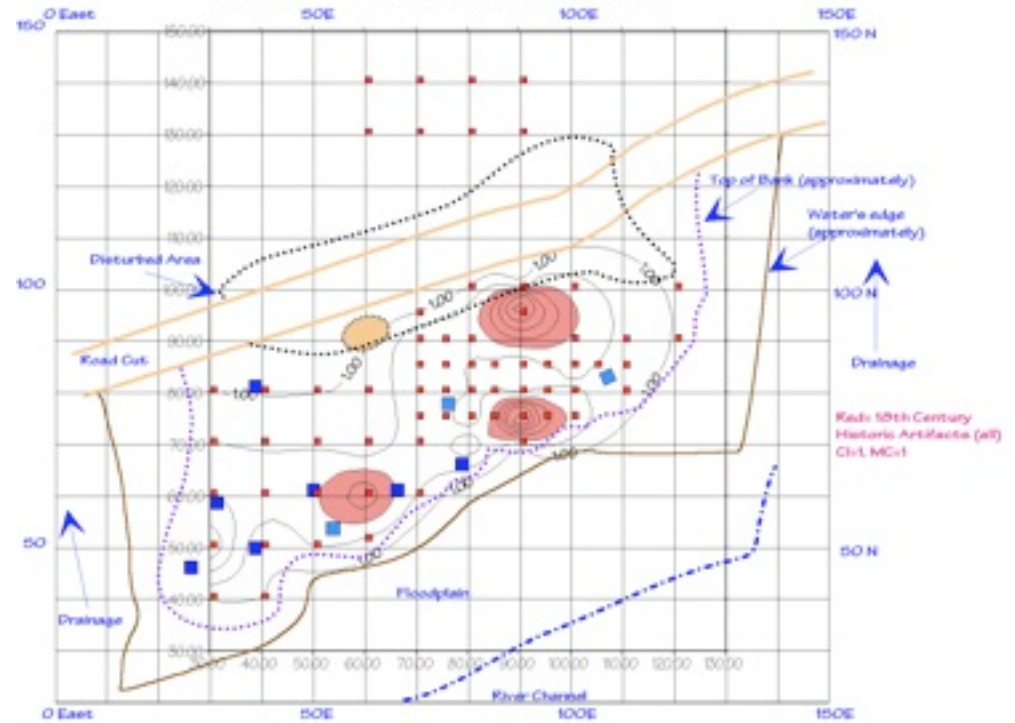
Blue= Flakes by weight, MC= 1g, CI= 50g

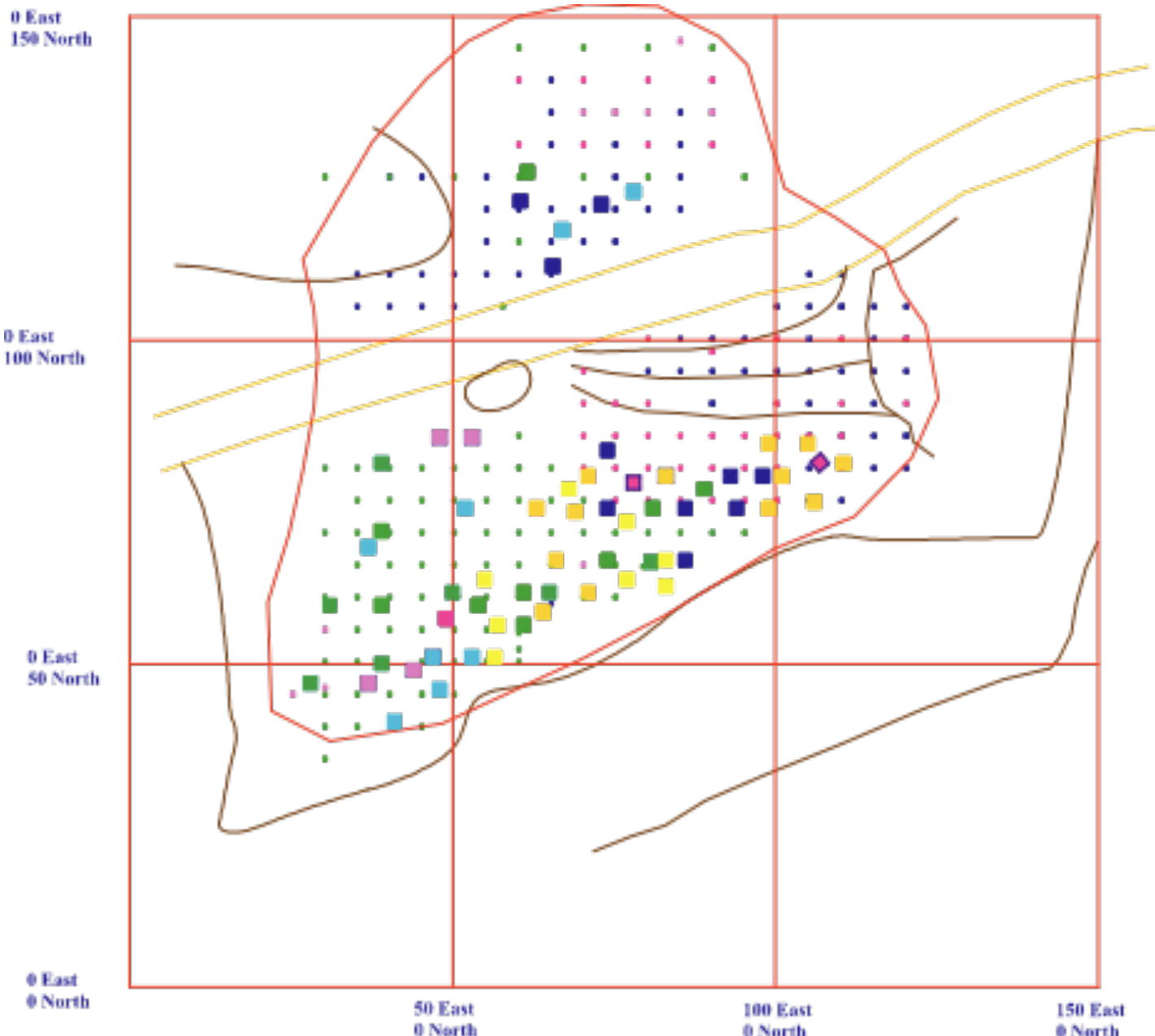
# Historic Artifacts

38DA75-- The Johannes Kolb Site



38DA75-- The Johannes Kolb Site





0 East  
150 North

0 East  
100 North

0 East  
50 North

0 East  
0 North

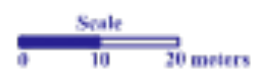
50 East  
0 North

100 East  
0 North

150 East  
0 North

- 1997 Units
- 1998 Units
- 1999 Units
- 2000 Units
- 2001 Units
- 2002 Units
- 2003 Units
- 2004 Units
- 2005 Units (planned)

Contour interval=20cm  
Green Contours at one meter













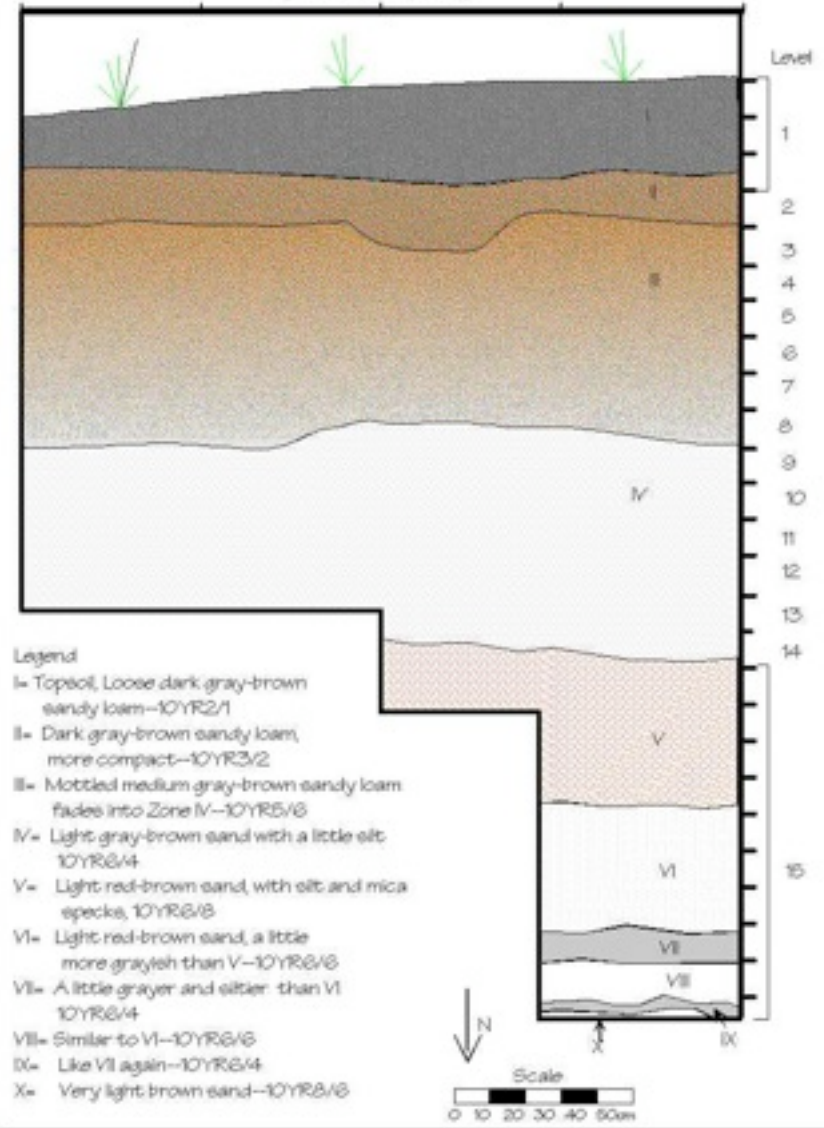








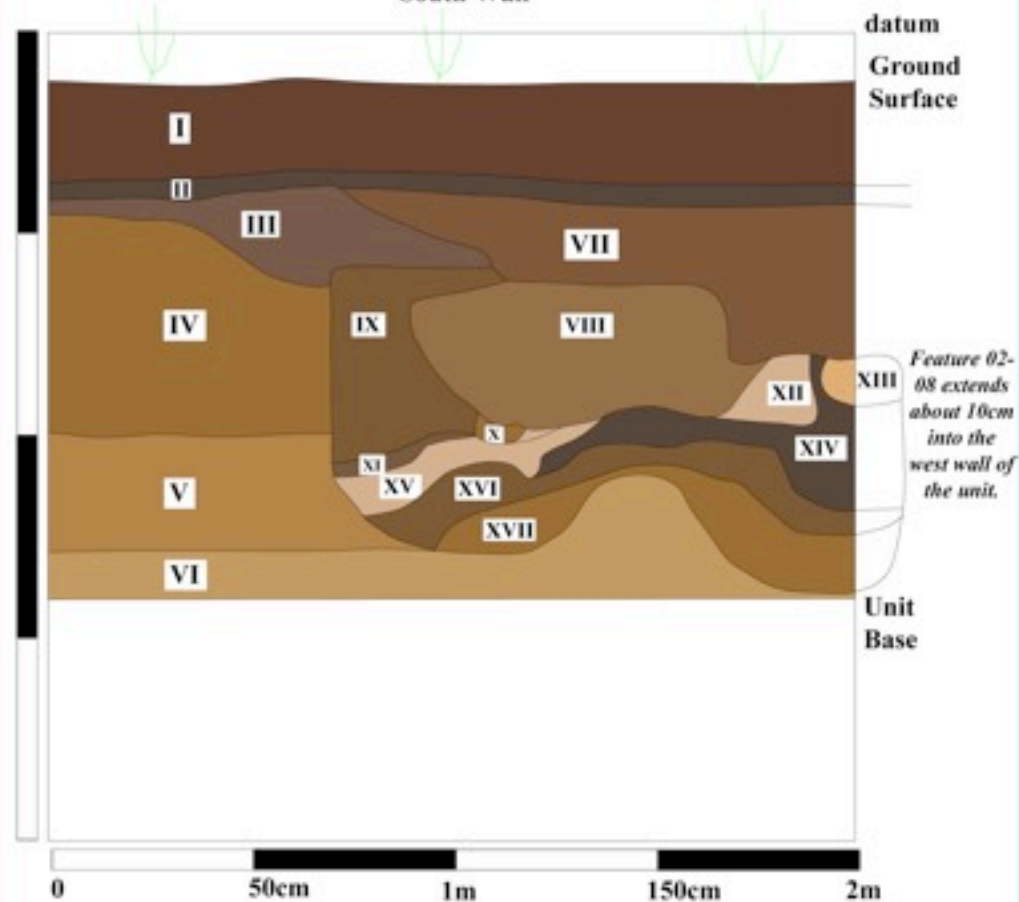
38DA75--The Johannes Kolb Site  
 106E 82N  
 South Profile  
 (106--108E, 82N)







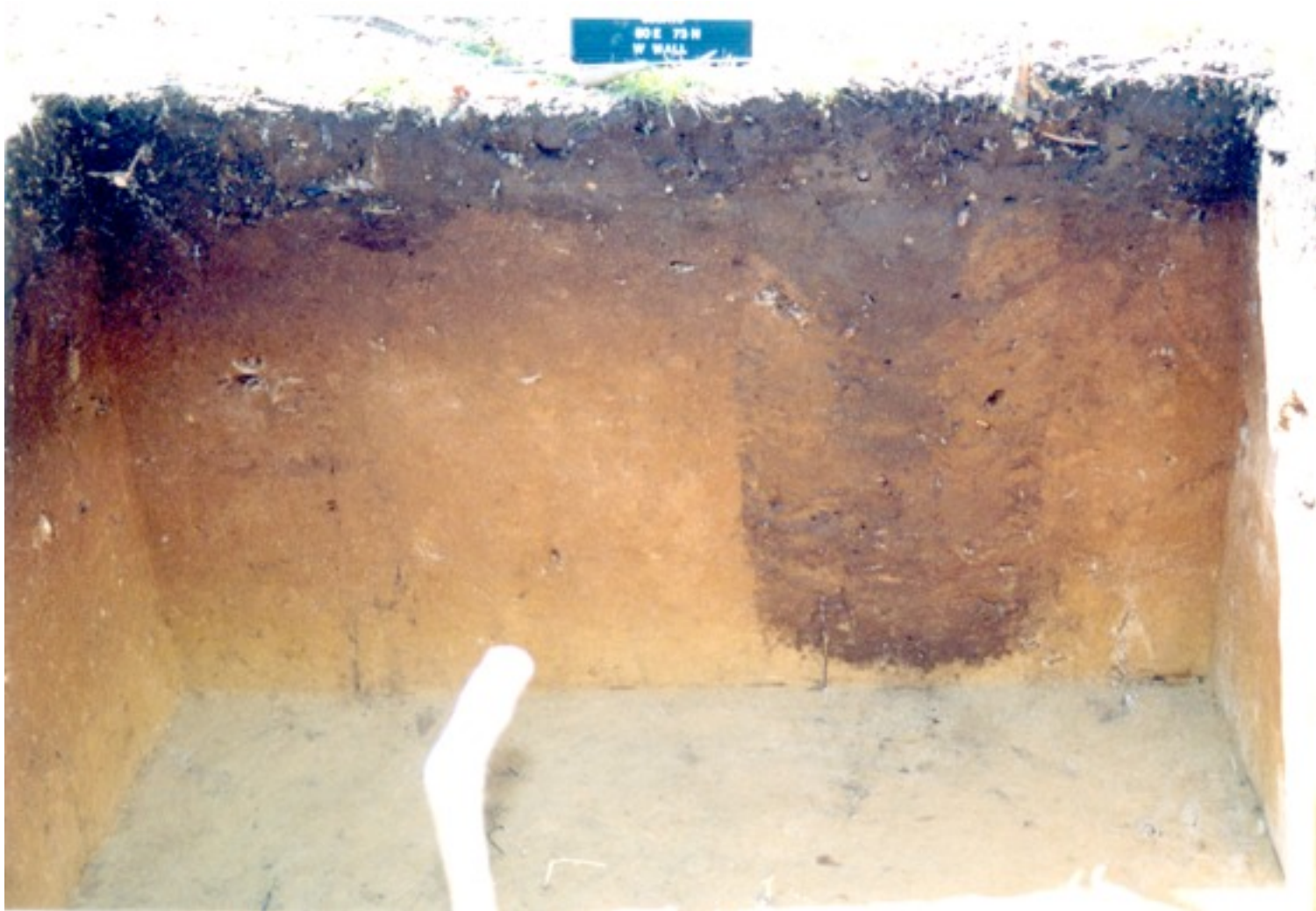
38DA75  
The Johannes Kolb Site  
Profile Drawing  
40E 40N  
South Wall



- I= Loose topsoil. Dark gray brown. 10YR2/2.
- II= Intact midden layer. Dark gray. 10YR2/1
- III= Feature 98-08-dark reddish gray sandy loam. Probably pit back fill. 7.5YR3/2.
- IV= Zone II- Medium brown mottled sand. 10YR4/6.
- V= Zone III- Lighter brown sand. 10YR5/6.
- VI= Zone IV- light tan sand. 10YR7/6.
- VII= Feature 02-08, Upper pit fill. 7.5YR3/4.
- VIII= Feature 02-08, Inner pit fill. Few artifacts. 10YR4/4.
- IX= Feature 02-08, Outer pit fill. 10YR3/4.
- X= Feature 02-08, Pocket of light sand. 10YR4/6
- XI= Feature 02-08, Dark fill lens. 10YR3/3.
- XII= Feature 02-08, Mottled area. 10YR3/4 & 5/6.
- XIII= Feature 02-08, Mottled area like XII. 10YR3/4 & 5/6.
- XIV= Feature 02-08, Dark lens. 10YR2/1.
- XV= Feature 02-08, Mottled lighter lens. 10YR 4/6 & 6/8.
- XVI= Feature 02-08, Dark lens stained by XIV. 10YR3/4.
- XVII= Feature 02-08, Basal zone. Slightly grayer than Zone IV (8VI). 10YR4/6 & 4/4.









# The Johannes Kolb Site 38DA75

## Excavation Plan and Surface Contour Map

