

“Progress vs. Preservation”

Angela Brown, Teacher

browna@kcsd.k12.sc.us

7th Grade Unit

SEAGUL Program

Academic Gifted & Talented Program

Kershaw County School District

Problem Based Unit

Developed by SEAGUL Teachers in conjunction with Chris Judge, Archaeologist, SC DNR.

Scenario: Should a marina (or other commercial development) be allowed to develop a the Adamson Mound site on the bank of the Wateree River?

Private property (currently)

Location (near major commercial district; Wal-Mart, Kmart)

Kershaw County's rich Native American History (highest concentration of existing mounds in South Carolina)

Sequence of Lessons

Problem Based Question

Have students brainstorm what they know, need to know & how to find out

Visit to the Camden Archives

looking for clues indicating historical significance

Guest Speaker, Chris Judge (Archaeologist, SC DNR)

Foundation is laid for students to appreciate historical significance of site

Guest Speakers, 6 Different Interest Groups

Realtor, Chamber of Commerce, Environmentalist, Historian, Zoning Representative, Economic Development

Development of Student Views (representing their interest group)

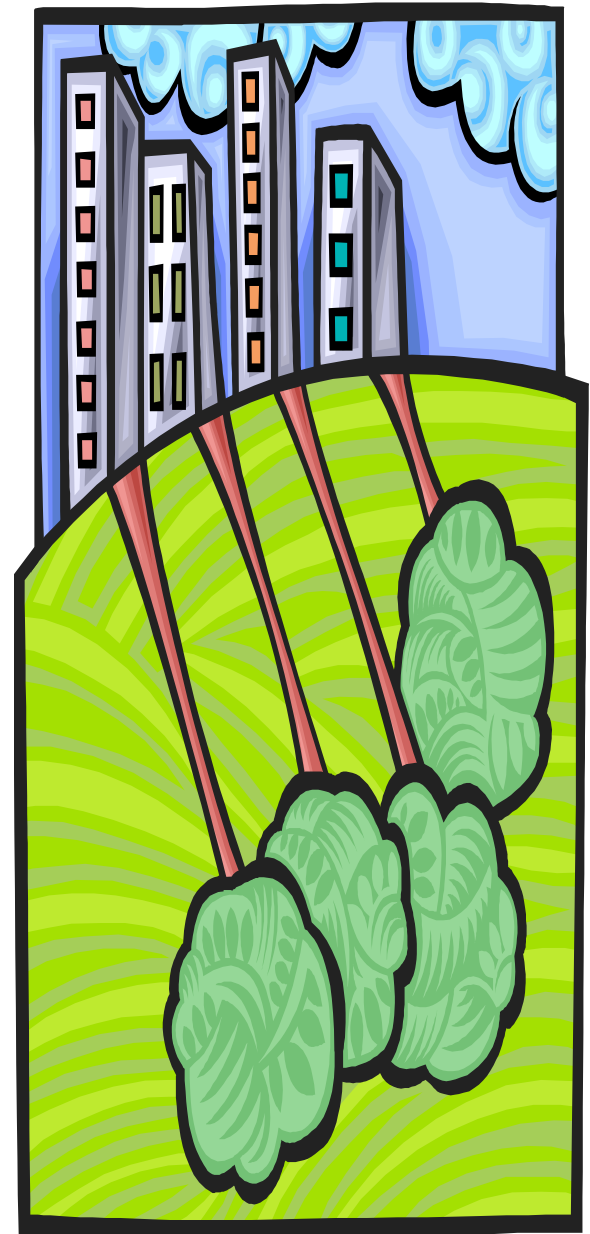
Students adopt the viewpoint of the interest group they chose to serve on
Students develop statements to be presented to the Mock County Council
Representatives are elected to serve on Council

Mock County Council Meeting

Parents and members of the community are invited

Students are challenged to listen to alternative points of view and argue persuasively (with justifications) to prove their point

Meeting ends with the "Council Members" taking a vote to decide whether the Marina should be allowed to come or should the Native American Mound be protected and preserved?



Forced Choice

Deciding what history to sacrifice.....

One of the following historic sites must be sacrificed to allow for the development of a new Shopping Mall.
Rank the sites in the order that you feel they should be sacrificed.

1=first you'd sacrifice

7=the one you value most; last one you'd sacrifice

Be prepared to justify your decisions
by giving well thought out reasons.



I = Individual Answers before Group Discussion
G=Group Decisions
R= Reflection

I	G	R

Kensington Mansion

This mansion, built in 1854, is a major architectural significance in South Carolina. It is a one-of-a-kind Italian style. The exquisite mansion is now owned by Union Camp, which has spent over a million dollars to restore Kensington.

Quaker Cemetery

This cemetery, established in 1759, is the resting place for many of Kershaw County's early settlers, war heroes, and distinguished citizens. The history of the community is recorded on the many monuments. Graves date from the 1700's to the present.

Kershaw-Corawailis House

The Kershaw House, with Its tall proportions and two story portico, is a replica of Camden's first mansion, built in the late 1700's by Joseph Kershaw, Camden's founding father. During the Revolutionary War, the British Commander, General Cornwallis, used the Kershaw House as his headquarters. The home is a major tourist attraction.

Friends of Children Home

This is the home for 29 disturbed children who have been brought here for treatment. Care was taken to provide a secure and homelike environment for their special needs. Another disruption could cause further serious emotional problems.

Magnolia Farms

This house is more than 100 years old, a classic In the plantation colonial style. Its furnishing are authentic period pieces. The Sanders family has lived in this house for six generations, and it has been carefully and lovingly preserved by them. George Sanders still farms on the same land that his great-great grandfather farmed on in the 1800's.

Carolina Horse Farms

This nationally famous horse farm raises and trains some of the world's finest race horses. Established In 1879, the Farm's location is ideal for steeplechase training. This horse farm helps bring millions of dollars into the community through tourism, Cup races, and the horse industry. It would take years, if ever, to recover lost money revenue and reputation if the farm were closed and moved.

Boykin Woods

The Boykin Woods is a 1000 acre section of forest and wetlands which is the only area in Kershaw County which has never been cut for logging or farming. Many of the ancient trees are no longer found in any other area of the county. The rare Red-Cockaded Woodpecker, which only nests in very large, old trees, has been sighted here during the spring.

Sources to Supplement Curriculum

- Field studies

- Archaeological digs
- Jamestown, Virginia
- Drayton Hall Plantation (preserved for over 250 years)

- Guest speakers

- Archaeologist (Chris Judge, DNR)
- History teacher, retired history teachers, local history buffs
- Alternative Points of View (as in special interest groups)

First Hand Experiences

Visits with Archaeologists to
Excavation Sites

Begin building an appreciation for
the past by understanding the
importance of archaeology....

Chris Judge, Archaeologist

SC DNR



Chris Judge with SEAGUL Students
Kolb Site Excavation, Darlington, SC

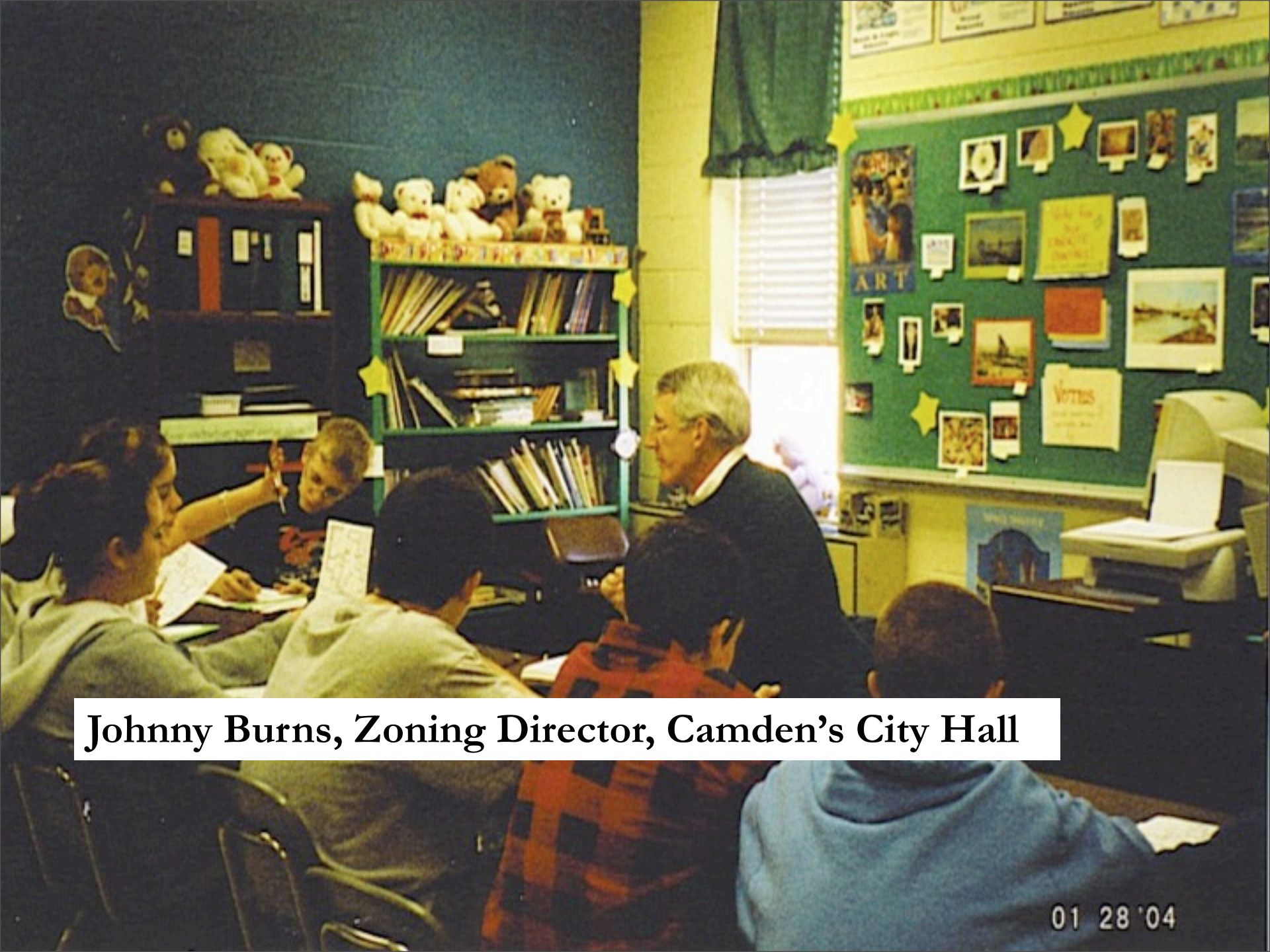




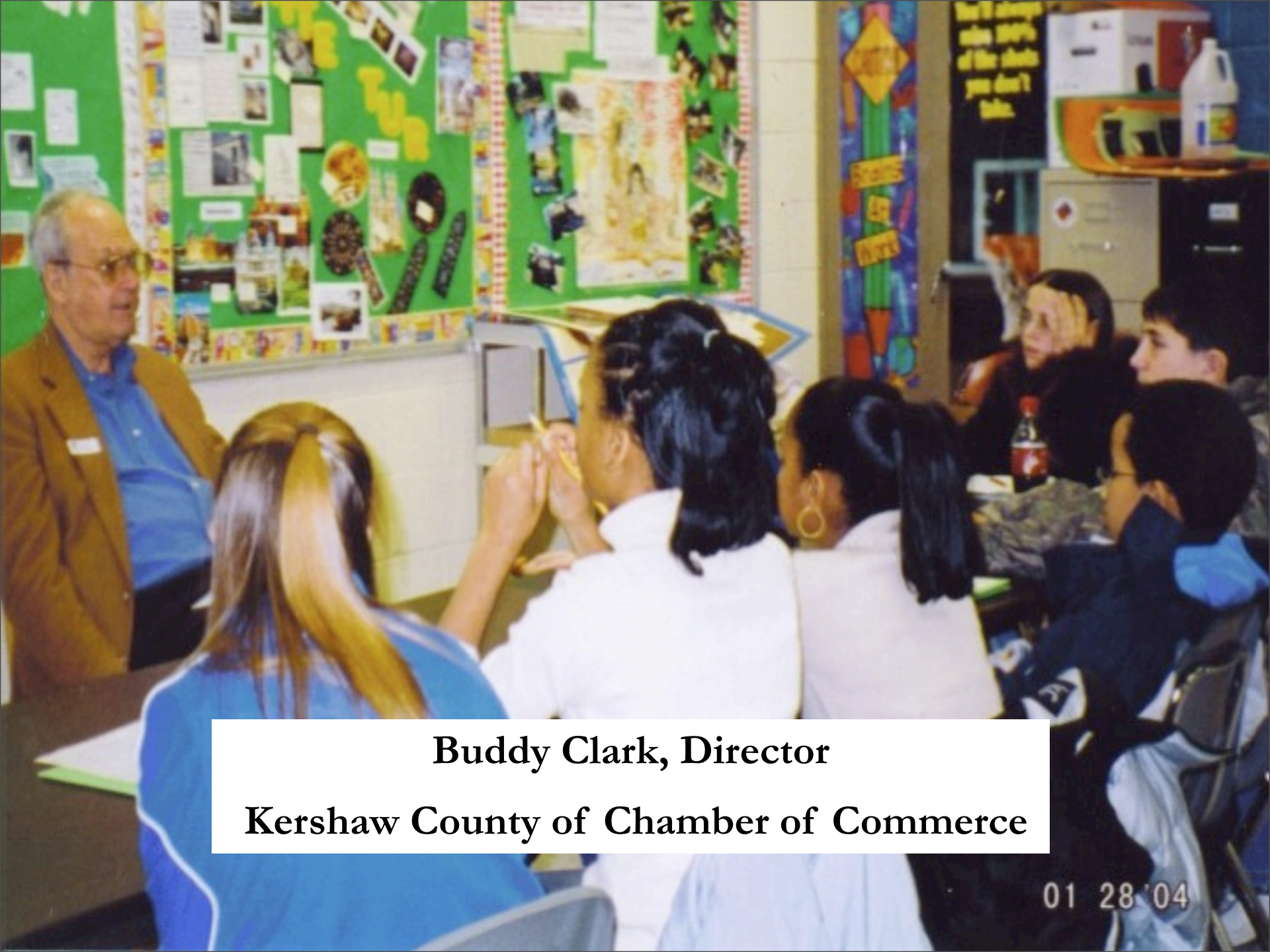


Encourage them to make Well Informed Decisions by helping them understand Alternative Points of View

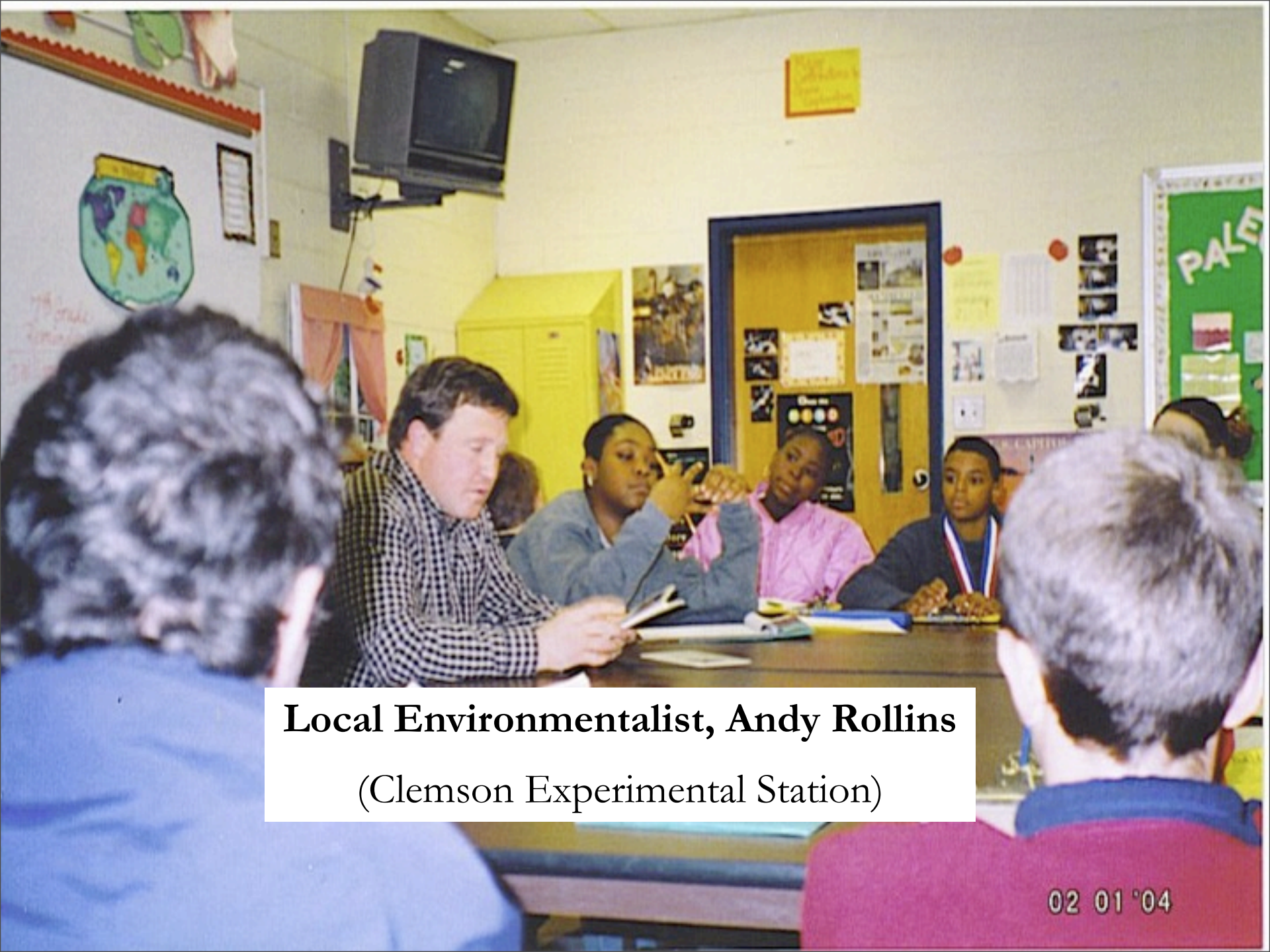
Guest Speakers (local members of our community) representing “Special Interests Groups” come to help the students understand the proposed destruction of a Native American Mound through their point of view.



Johnny Burns, Zoning Director, Camden's City Hall



**Buddy Clark, Director
Kershaw County of Chamber of Commerce**



Local Environmentalist, Andy Rollins
(Clemson Experimental Station)

02 01 '04



Local Realtor, Jan Marsh

Have Students Apply Their New Understandings Through “Simulations”

Mock County Council Meeting

- Special Interest Group Representatives Elected By Peers
- All Students Share Their Opinions About the Proposed Development
- Council Members Listen and Then “Vote” to Decide Whether to Protect the History or Allow the Development



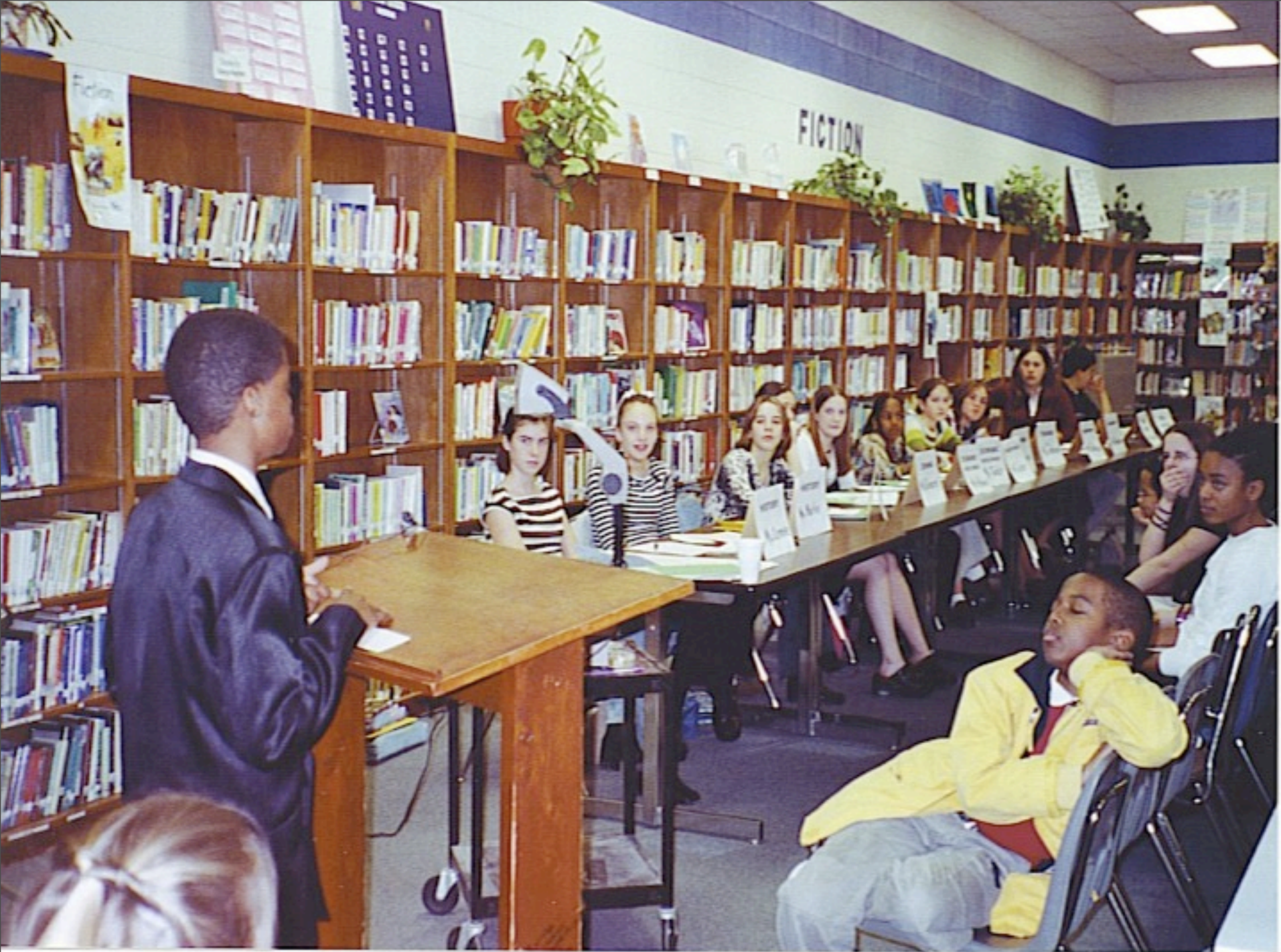
OUR STATE - OUR HOME
SOUTH CAROLINA











Hands On Opportunities to Experience History Through Archaeology

Field Study to Drayton Hall Plantation (Charleston, SC)

Students:

- participate in a simulated excavation
- chart their findings
- clean, sort & identify artifacts









Extended Learning Experiences

Field Study to Jamestown, Virginia

Powhatan Village











Points to Remember

- Bring in Experts
- Offer Hands-on Experiences
- Conduct Simulations That Require the Students to Apply,
Evaluate and Synthesize Information (Forced Choice & Mock Trial)
- Model and Encourage Well Informed Decisions by Discussing
Various Points of View
- Drive Home the Point that History is Irreplaceable & Reveal the
Counterarguments to the Benefits of “Progress”

